

Identifying Change in Estuaries

Ian Townend

ABP Marine Environmental Research Ltd, Southampton, SO14 3AE, UK
itownend@abpmer.co.uk

Abstract

Strategic management and planning within estuaries seeks to identify a framework that enshrines sustainability. Any management initiative must address the issues of long-term change; physical, chemical and biological interactions; and system response (including socio-economic interactions). Achieving such a programme will need to take advantage of studies and research at a number of different spatial and temporal scales. These range from global climate change initiatives, through catchment and estuary wide studies to work on specific features (banks, mudflats, etc). They necessarily consider changes over timescales of seconds to aeons. For strategic planning and management, the goal is to be able to predict change, with a reasonable degree of confidence over a 20 to 50 year time horizon. Given the highly non-linear and complex adaptive nature of estuary systems, absolute predictions may not be possible. Rather, it will be necessary to identify probable/possible outcomes, or system states, as a basis for guiding management actions. This, in itself, will require managers and planners to move away from a prescriptive interventionist approach towards a more adaptive one.

1. ESTUARY MANAGEMENT

The nature conservation importance of estuaries is well known and within the UK this is reflected in the fact that at least 75% of the area in estuaries has some form of European nature conservation designation¹. Estuaries are also highly productive and play an important role in the food chain. At the same time, conurbations that have developed alongside estuaries are often low lying and prone to flooding. The defences that now protect these areas inevitably constrain the estuary and, in the face of sea level rise, potentially limit the way in which the estuary can respond. Equally, as a trading nation, 84%² of UK imports and exports pass through ports in estuaries. Continued growth, the development of shipping and the greater emphasis being placed on short-sea shipping to improve the inter-modal transport balance mean that there are pressures for ports to expand and develop new facilities. As with flood defence this has the potential to constrain the future evolution of the natural estuary system.

The problem is made more complicated by the very nature of estuary systems. Within an estuary, form and process are inextricably linked and there are no obvious dependent and independent variables, or clear cause-effect hierarchies.

For example although the size and shape of an estuary channel is a response to tidal processes, the tidal discharge is itself dependent on the morphology of the channel, since this determines the tidal prism³. This interdependence means that changes in one part of the system can cause responses elsewhere in the estuary over a range of timescales. It follows that a strategic approach to estuary management must consider the estuary as a whole, managed within the spatial context of river/estuary/sea.

Changes such as reclamation, dredging and the removal of flood storage areas by the introduction of flood defences, all alter the dynamics of the system. Ironically schemes to protect fresh water habitats at the margin of estuaries are progressively having the same effect. Many of these anthropogenic changes can be likened to various geological features that occur within estuary basins (such as variations in the underlying bed formation, some areas being relatively soft and erodible and other areas being hard and more resistant). Both serve to apply constraints on how the estuary can evolve. As the estuary adjusts to these various constraints, particular features within the estuary, such as the extent or position of intertidal, saltmarsh, sandbanks, etc, will also change. It is important to recognise that the estuary will adjust to the imposed constraints, both natural and anthropogenic.

¹ European sites comprise Special Protection Areas for birds and Special Areas of Conservation for habitats and species

² by tonnage

³ The volume of water that moves in and out on each tide

Consequently there is little point in seeking to define what the “natural” estuary system would look like. The central question for management is, rather, whether any changes that are imposed will alter particular estuary features, that we⁴ value, in a way that we consider unacceptable?

2. MANAGEMENT FRAMEWORK

As a consequence, management frameworks have been proposed which are modelled on a cycle with a continuous feedback process. In an institutional context the pressure-state-impact-response model has been suggested as a means of identifying key issues for environmental management, Figure 1 (Turner *et al.* 1998).

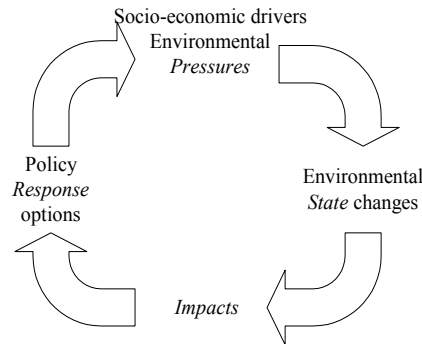


Figure 1: P-S-I-R model (Turner *et al.*, 1998)

Nested within this high level framework, more specific frameworks have been proposed to address some of the issues found on the coast (Townend, 1990; Townend, 1992; Capobianco *et al.* 1999) and in estuaries (Barham, 1997; Pontee & Townend, 1999b). For instance, when considering the morphological response of an estuary, it is possible to consider two approaches, Figure 2. One strand considers the resource to be developed or protected (eg existing or proposed infrastructure) and requires the impacts on the estuary as a whole to be identified. The second, parallel strand seeks to establish how the estuary will evolve subject to ongoing changes in the environment (such as sea level rise) and determine how this might impact on anthropogenic interests in the estuary (eg flood protection or navigation).

The limitations of this tool box and in particular the ability for the outputs to inform the management process is one of the key drivers for further research (Townend, 2002).

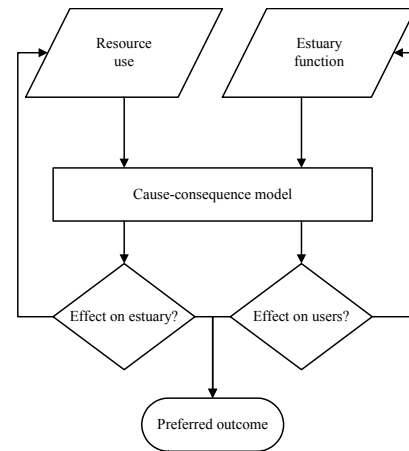


Figure 2: Parallel strands for the assessment of management actions (Pontee and Townend, 1999b)

In order to carry out either of these assessments it is necessary to predict the system response. This is simply encapsulated in the cause-consequence model in Figure 2 and refers to a process of identifying causes of change at a number of spatial and temporal scales, determining the system response, and hence predicting the consequences, again at various spatial and temporal scales, Figure 3. For the present there is no one model that provides the response component. Rather, there are a whole range of analytical and numerical tools that collectively provide a basis for making an assessment (Pontee & Townend, 1999a; EMPHASYS Consortium, 2000).

3. IDENTIFYING & PREDICTING CHANGE

The estuary system behaviour, with complex feedback loops and a multiplicity of spatial and temporal scales interacting, as described above, means that representing this in some form of analysis or model is not straightforward. Whilst this is an active area of research in many organisations around the world, there is currently no single model capable of representing the complex interactions of the estuary environment. For this reason, a carefully structured approach is needed to develop a proper understanding of the governing processes over a range of spatial and temporal scales. This starts with the geological setting (ie thousands to millions of years), at a scale of the whole river basin/regional sea, and spans down to a single wave moving sediment particles. Time and space scales are linked and great care is needed to ensure consistency. A simple example arises when comparing field data with the output from numerical models.

⁴ society

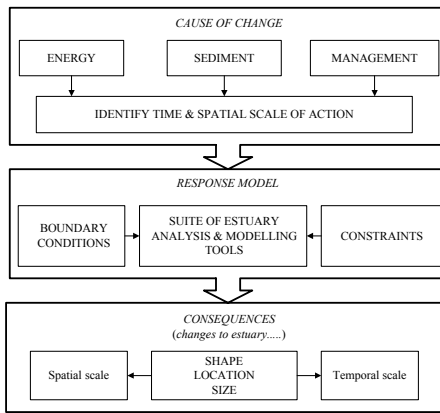


Figure 3: Cause-consequence model for morphological response in an estuary (Pontee and Townend, 1999a)

The former often provide data at a point averaged over some period of time, whereas the latter output spatially averages information at a given instant. Due allowance must be made for these differences. More difficult cases involve the interaction between different space-time scales, which are quite often associated with very different equilibrium states and response times.

To establish an understanding of how a system has developed, currently functions and is likely to evolve in the future, it is necessary to consider at least some elements of the combinations of space and time presented in Table 1.

There is of course significant overlap and interaction between the different space and time scales, as presented above. In terms of our present state of knowledge, the geological time scales and the contemporary time scales (years to seconds) have been well researched. The decadal time scale is now receiving greater attention through a number of national and international research programmes. Whilst useful historical information can be gleaned from the archaeological record, the ability to link decadal change into the Holocene evolution is currently the weakest aspect of our knowledge (Townend, 2002).

3.1 Summary of Process

The need to identify and predict change usually arises as part of a strategic planning exercise (e.g. estuary management plans or climate change impact assessment) or some site specific activity (e.g. flood defence, dredging, reclamation, etc). As with any project or planning initiative, there are likely to be specific goals to be achieved, with constraints defined by the time and funds available. For this reason, it is important to have a clear understanding of the problem to be addressed at the outset.

Table 1: Model characteristics.

TIME	SPACE
Geological (thousands-millions of years)	Underlying form and geology of the whole catchment and adjacent sea area
Recent geology (ie Holocene covering the last 10,000 years)	Development of the main features of the estuary and distribution of mud and sand features
Historical (centuries)	Refinement down to large-scale features in the estuary, such as channels and islands. Begin to take account of human activities such as early settlements, reclamation and dredging
Decadal (10 to 100 years)	Intertidal flats, saltmarshes, meandering channels, creeks, spits, banks and shoals. Small cumulative signals, such as long-term changes in sea level, begin to have significant effect on the morphology of the estuary. This may result in horizontal and vertical changes to the position of given features, including the estuary as a whole.
Seasonal/annual	Changes to fluxes in and out of estuary and on and off intertidal areas (due to changes in river flows, storminess, etc)
Tidal period (12.4 hours for a semi-diurnal tide)	Ebb and flood channels, drainage channels, tidal excursion distance.
Wave period (a few seconds)	Bed features such as ripples and sand waves.

Furthermore, this understanding should be reviewed at intervals through the project, as knowledge increases, in case there is a need to refine or revise some of the project objectives.

Once the problem is clearly defined, it is possible to scope possible approaches. There is no one approach and a number of participants will influence the choices to be made, notably:

- degree of certainty required to address problem;
- timescale for study;
- the available funding;
- access to resources (trained staff and appropriate equipment/models, etc); and
- existing sources of information/data.

Even at this early stage it is helpful to start formulating a conceptual model. The aim is to identify the mechanisms and hence the system behaviour that, for a given set of circumstances, will provide an appreciation of the likely modes of change.

This can be done using the literature for well studied estuaries, or by comparison with other similar estuaries for those that are less well studied. In a well developed case this may be a quantitative set of predictions. Alternatively, where there is only limited information, the conceptual model is likely to be more qualitative.

By considering how the various methods of analysis and modelling contribute to the solution, a work programme can be developed. This will need to be reviewed and agreed. It may be that the work can best be progressed in a series of phases. For instance, some analysis of the existing data may identify important data gaps, or improve understanding, so that subsequent phases of work can be modified to make best use of information from earlier phases. Whether the work is done in phases or not, it is always helpful to set out key milestones at which particular outputs are to be delivered. This helps to ensure progress towards the overall objectives.

As the work is being progressed, documentation and careful record keeping is important, as this will greatly aid the resolution of conflicts and uncertainties during the interpretation phase of the work, particularly if a number of different types of analysis are being undertaken in parallel. Individual components of the work will need to be summarised and key findings clearly identified. In this process it is essential to distinguish between factual information and interpretation that relies on particular assumptions.

Bringing the findings of the various studies together involves the process of synthesis. To some extent, this is a subjective matter and each individual will go about it in a slightly different way. However, where the conclusions have to be presented to a range of users (perhaps as part of the consultation process) the basis for any conclusion will need to follow logically from the factual information and be as transparent as possible. A framework, which is as objective as possible, is therefore desirable.

For this the conceptual model provides both a framework and a test bench to help explore the meaning and consistency of the various study outputs. This will necessarily need to be on a number of spatial and temporal scales and may address the response of specific features (such as saltmarshes) as well as the estuary system as a whole. Each of the various outputs is mapped onto the conceptual model.

For some aspects there will be only limited information. For others there may be several sources. In each case it will be necessary to evaluate the uncertainty and, if necessary, consider what further information would help to reduce the level of uncertainty. Where different sources are incompatible, or conflict, the uncertainties need to be clearly identified and, where possible, resolved. It may be that the conceptual model can help to resolve the differences by indicating which source is most consistent with the overall picture. The aim is to establish a description of how the system works and how it will be affected by particular changes. The findings of the synthesis and, in particular, the conceptual model can then form the basis for assessing the future changes and the resultant impacts.

The overall process of identifying change can therefore be summarised as four steps:

- 1) Define problem;
- 2) Scope approach;
- 3) Implement work programme; and
- 4) Synthesise the results.

Any changes identified then feed into the impact assessment process. A breakdown showing the main considerations for each of these steps is shown in Figure 4.

3.2 Synthesis

The various studies provide factual information and outputs from analyses and models. Either individually or collectively these establish or refine the understanding of particular mechanisms in the estuary. However for the reasons already given, these may not be sufficient to define the overall behaviour (particularly in the long-term).

The task of synthesising the results therefore aims to formulate a behavioural summary of the estuary system as a whole.

The process of synthesis to establish or refine the conceptual model should utilise as much of the available data and knowledge of the estuary as possible. This allows the conceptual model to be tested against the different sources of information, to establish supporting evidence, or possible conflicts. Where there are contradictions that cannot be reconciled, the results should be presented to highlight the uncertainty, or further studies undertaken to resolve the uncertainty.

The steps involved are summarised in the Synthesis box in Figure 4. An initial process of testing the conceptual model against factual data helps to eliminate any obvious misrepresentations and identify any areas of uncertainty. It is important that this is not done using interpreted results as these may depend on assumptions that underpin the particular outputs and this may mask the real behavioural response.

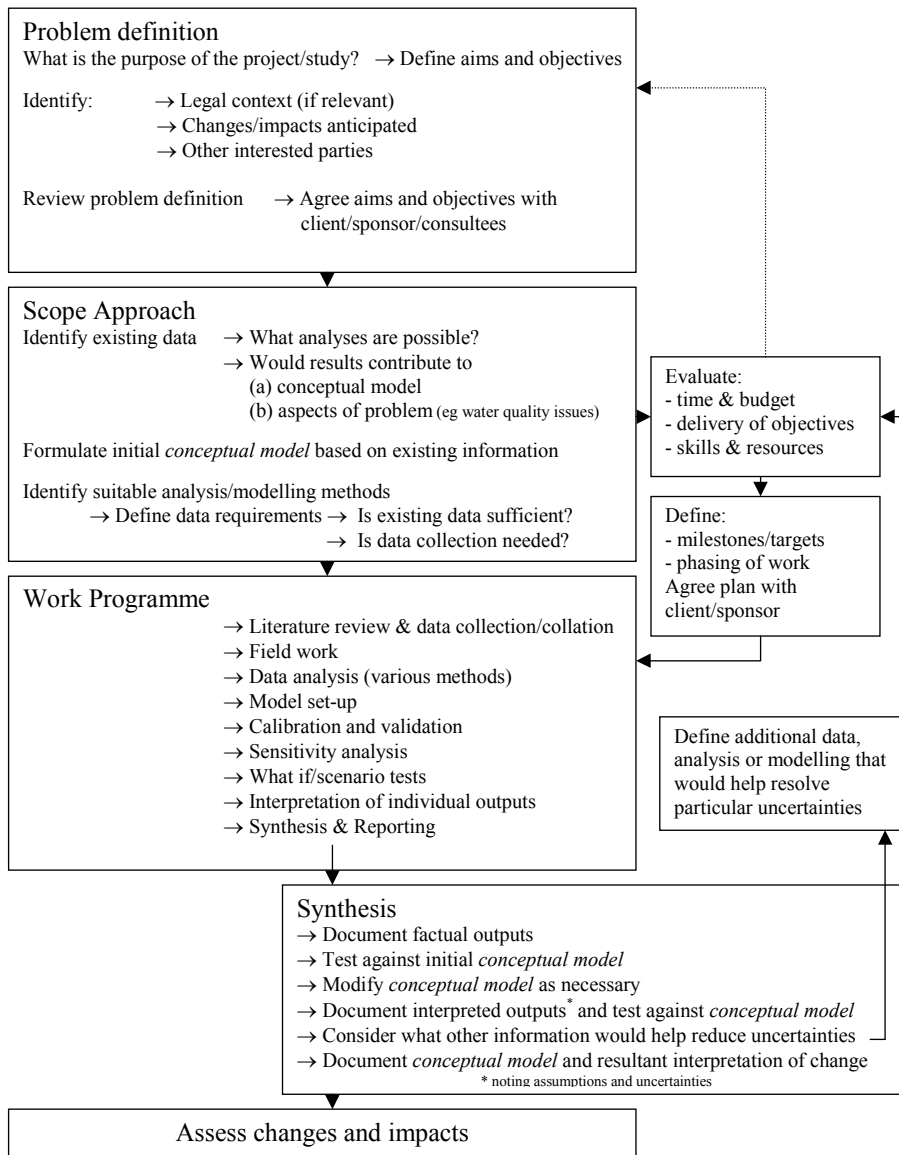


Figure 4: Summary of process to identify/predict change

Most computational modelling results fall into this category. At this stage the conceptual model is founded on established behavioural concepts (as documented in the literature) and the factual information for the particular estuary. The next step is to introduce the additional information from the various analyses and modelling studies.

These again provide a basis for evolving the conceptual model but this should now be done with much greater caution; recognising that the study results and the underlying assumptions may be the cause of any discrepancy⁵, rather than some aspect of the conceptual model.

⁵ This can include field data which may itself be subject to error and uncertainty

Uncertainties in the conceptual model should now be much clearer. In some instances, there may be the opportunity to consider further modelling or field data collection that might help reduce the level of uncertainty. Sensitivity studies, in particular, can help bound the level of change associated with particular variables and so focus attention on the more significant areas of uncertainty.

Finally the results must be documented in a way that explains the conceptual model and makes clear any uncertainties. There is no established way of doing this and the approach is likely to vary from one situation to another. In most cases the conceptual model will comprise a written description, illustrated with results, schematic figures and flow diagrams. The complexity arises because one is often trying to present a number of behavioural concepts that interact over different space and time scales. Without any clear hierarchy this can be difficult to communicate. Whilst there are various forms of system diagram that allow the linkages to be identified, such techniques often fall short of encapsulating the behaviour of the system.

One way of communicating this complexity to the user is to describe the behaviour in a series of space-time intervals. Using a table, where the columns define time intervals and the rows various spatial elements that make up the system, an explanation of the mechanisms at work and the resultant behaviour can be given, as illustrated in Table 2. Individual cells in the table can then link to sections in the explanatory text (or separate reports) that provide a more complete explanation. In addition the same format can be used to summarise the existing situation and the behaviour predicted for a given set of imposed changes (eg sea level rise, new development, etc). This is particularly valuable if there is a need to use the results in some form of impact assessment.

Table 2: Table to summarise space-time changes

	Short-term	Decadal	Holocene
Adjacent coast			
Mouth			
Ebb/flood delta			
Estuary			
Rivers			

3.3 Conceptual Model

Whilst the starting point for a behavioural system is invariably the energy and sediment pathways, it is important to identify the causative mechanisms as a basis for building a robust means of predicting the response to change. This must take account of variations in sediment supply and forcing parameters, such as tide and wave energy.

However, perhaps the most difficult aspect to capture is the effect of major perturbations, where the system response is to switch to a different state. For example the catastrophic failure of a spit, or the switching of channels as a consequence of episodic storm events.

The conceptual model endeavours to present the key components of a behavioural system in a way that allows the likely responses to change to be readily established. Even when all the relevant elements and mechanisms have been identified, this is not an easy task for two reasons:

- i) the complexity of interactions taking place at a range of spatial and temporal scales, with the dominant influence often depending on the nature of the change and the specific characteristics of the coast or estuary.
- ii) the limits to current understanding of behaviour, which give rise to a level of uncertainty which must be acknowledged when presenting the model.

Hence, great care is needed in the way in which the system is presented.

One way of presenting the change, is to use system diagrams (Capobianco *et al.* 1999). Such an approach is reductionist in character, showing the components that comprise the system. For systems that are essentially linear this provides a clear map of cause and effect. However for dynamic non-linear systems the resultant "form" is more difficult to discern. Such systems are unlikely to be in equilibrium and any steady-state will be a dynamic one, changing as the imposed constraints and energy flows vary. Given that we have variable climate and variable constraints (such as a non-homogeneous erodible geology) it is inevitable that the target steady-state, or states, will be continuously changing.

The time taken to respond to a given perturbation will also vary for individual features and this will tend to introduce lags into the system. Consequently, it is more probable that the system will be in transition, moving towards a steady-state, rather than in a steady-state condition.

It is this juxtaposition of:

- i) the behaviour of the component parts, each seeking their own target state; and
- ii) the mix of space and time scales.

There is thus a need to be very clear when discussing equilibrium (of whatever form: steady, dynamic, quasi, etc) about which parts of the system are involved and over what timescale the state is determined.

There are a number of behavioural models that summarise steady-state conditions, or explain transitional behaviour. These provide an indication of the likely mode of change.

Typically, they are dissipative processes in which the system seeks to do as little work as possible. However, because of the open nature of estuary systems, these dissipative processes give rise to inherent structure. This can be seen by noting the similarity of a number of readily identifiable forms, for the estuary as a whole, and internal features such as, mudflats, channel networks, bed forms, banks, and spits.

With an appreciation of these phenomena, it is possible to examine how the system may evolve. Given changing forcing conditions and / or variations in the constraints imposed, the system may:

- i) alter its rate of transition;
- ii) switch to a different but similar state (form) (eg when a channel meander switches);
- iii) switch to a different state (form) altogether (eg flood to ebb dominant).

This approach allows the mode of change to be examined, and the likely outcome (or range of outcomes) to be determined, even when it is not possible to make quantitative predictions.

The conceptual model must be coherent and provide a self-consistent summary of the how the estuary functions. At its most basic, the model may be no more than a sediment budget. However this says little about the system behaviour and so a more well developed conceptual model will identify both the mechanisms and the behavioural interactions that are likely to give rise to particular forms and states.

3.4 Worked Examples

3.4.1 Simple model

One of the simplest ways to encapsulate the behaviour of an estuary is through a sediment budget. This describes the main sediment exchanges, both in and out of the estuary and internally, Figure 5. Further refinement can add detail to the description of the various sediment transfers. It must be recognised that this says very little about the current state of the estuary or how this state may change in the future.

In many cases it can be difficult to identify, let alone quantify, all the mechanisms that give rise to sediment transfers. It may however be possible to derive approximate estimates of the amounts moving to and from sources and sinks based on measures such as transport potential and sediment demand. In effect one establishes an account and as with any account, the prime requirement is that it balances. For this reason, Pethick suggested the sediment audit as an approximate balance that could be carried out on a number of scales (eg local, sediment cell, or regional). The relative importance of changes in supply and demand could then be assessed at the different scales being considered (Pethick, 1992).

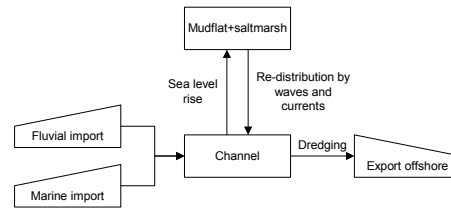


Figure 5: Simple example of sediment budget concept

An example of a net sediment budget is proposed in (Townend & Whitehead, 2002), as illustrated schematically in Figure 6. This does not describe the gross movements of sediment (eg the amount moving back and forth on every tide) but focusses on the net exchanges between key features of the system.

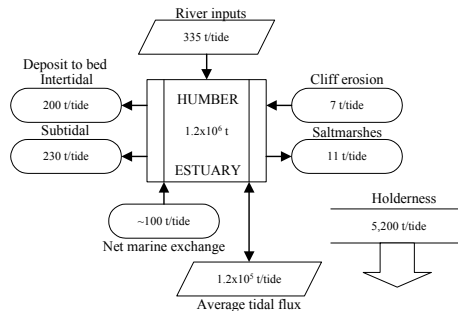


Figure 6: Schematic for net sediment budget for the Humber

3.4.2 Complex model

As a result of further detailed studies, a more complete description of the behaviour of the system as a whole, and its component parts, can be developed. Such a range of studies has been undertaken for the Humber as part of the preparatory work for the development of an estuary wide flood defence strategy (Townend *et al.* 2000; Townend & Pethick, 2002). These were synthesised using the space-time tabulation, as described above, where each space-time cell is based on a synthesis of a number of relevant studies, Table 3.

The explanation of this table and the assessment of how the estuary may change under different scenarios of sea level rise or the removal of various lengths of sea defence are explained more fully in the synthesis report (ABP Research, 2000). Hence in this case the conceptual model is not a single description but rather a multiple space-time description, where there is an appreciation of the relative importance of individual behavioural components but the precise interactions between components is not fully understood.

Table 3: Summary of space-time changes for the Humber Estuary

TIME SCALE FEATURE	HOLOCENE CHANGE (8000BP–PRESENT)	DECADAL CHANGE (10-100 YEARS)	SHORT-TERM CHANGE (TIDES AND STORMS)
Estuary	Landward transgression due to predominantly monotonically increasing sea level. Physical constraint of the sill at Hull has had a major influence on the estuary form as sea levels have risen.	Continued adjustment to both sea level and the reclamation of large areas of upper intertidal. Estuary has infilled whilst maintaining the overall volume of water as sea level has risen. Some evidence of landward transgression, with shorter-term response to variations in sea level (eg lunar nodal cycle).	Significant sediment flux and bed level changes dominated by tidal flows, with fresh water flows having increasing influence landwards and waves and density currents influencing movements in outer estuary.
Mouth	Mouth retreats along line of channel from New Sand Hole to present position	Acts as a tidal embayment. Spurn has been held by defences but is now beginning to realign as defences fail.	Major circulation cell around Bull Sand Fort. Storm action eroding the Holderness cliffs influences sediment supply to Spurn and the estuary.
Meanders	Channel alignment seaward of Hull cut into the tills by ice melt and subsequently fluvial flows. Tidal waters have progressively occupied and infilled the channel, with periods of stable alignment and periods of migration.	Meanders in the outer Humber are constrained by underlying till. In the inner Humber, channel switching from south to north of Reed's Island is a result of large river flows, in conjunction with periods of relatively high tidal range. The training works at Trent Falls have reduced the length over which this switching occurs.	Switch of meander from south of Reed's Island into the Redcliff channel happens in response to major flood events. The switch back, to north of Reed's Island is more of a progressive migration. If the period between flood events is long enough, the channel switches to south of Reed's Island.
Rivers	Humber lake infilled initially with fluvially derived sediments, followed by the formation of tidal channels once sea level rose over the sill at Hull. Some evidence for substantial movement of the river alignment.	Heavily constrained by flood defences all the way to the tidal limit on the main rivers. There is a gradual switch, some 20km above Trent Falls, from tidal to fluvial dominance. There appears to be a cyclical link between fresh water flows and sedimentation in the outer estuary.	High flows during winter periods with very little storage space. Trent is artificially charged and so low summer flows not as significant on this river.
Ebb/flood delta	Only evidence is the scour holes in the palaeo-channel out to New Sand Hole, which suggests that any sand bank/delta formations migrated with the mouth	No evidence of a delta in the vicinity of Spurn. Hydraulic and sedimentary evidence indicates circulation cells around Foul Holme Spit and Middle shoal, suggesting that the delta may operate about a "mouth" at the neck just west of Hawkins Point and Grimsby	Middle shoal exhibits rapid change and also responds to longer-term trends, which appear to be linked to variations in fresh water flow. Foul Holme Spit exhibits less rapid, more progressive changes.

4. CONCLUSIONS

One of the difficulties in identifying morphological change in estuaries is that there is as yet no well defined theoretical framework. The constituent processes are understood to a greater or lesser degree but the basis for formulating the behaviour, related to dynamic equilibrium states, is far less developed.

The process outlined seeks to use the methods and techniques that are currently available, to identify system behaviour in a way that is transparent, with a clear recognition of the current uncertainties.

A key to this process is the synthesis of the study findings and the way in which the results are presented.

Both of these areas would merit further research. For the former, the development of a more formal experimental basis may be of benefit (Mayo, 1996). For the latter, interactive presentations, with the user able to investigate particular aspects in more detail, supported by a mix of graphics, animation and text, may well provide the way forward.

5. FURTHER INFORMATION

The work of the EMPHASYS consortium is summarised in a series of reports available on the HR Wallingford web site⁶. In particular, there is a guide to the prediction of morphological change within estuarine systems (Report No TR 114, 2000). A number of relevant papers are also available on the *ABPmer* web site⁷.

ACKNOWLEDGEMENTS

The author would like to thank members of the Humber Geo2, EMPHASYS and Futurecoast consortia, Estuary Advisory Group, and all those who have had an involvement in ABP's work on the Humber and Southampton Water for the many useful exchanges which have helped formulate several of the ideas presented here.

REFERENCES

- ABP Research, 2000, *Humber Estuary strategic geomorphological studies -Stage 2: Technical Report*, Report for the Environment Agency, Leeds, Binnie,Black & Veatch,
- Barham P, 1997, Humber estuary flood defences: a strategic approach, Proceedings of the 32nd *MAFF Conference of River and Coastal Engineers*, MAFF, London; pp. F.3.1-F.3.10
- Capobianco M, de Vriend H, Nicholls R, Stive MJF, 1999, Coastal area impact and vulnerability assessment: the point of view of a morphodynamic modeller, *Journal of Coastal Research*, 15(3); pp701-716
- EMPHASYS Consortium, 2000, *A Guide to prediction of morphological change within estuarine systems*, Estuary Research Programme, Phase 1, HR Wallingford, Wallingford TR 114; pp51
- Mayo DG, 1996, *Error and the growth of experimental knowledge*, The University of Chicago Press, London
- Pethick JS, 1992, Strategic planning and coastal defence, *27th River and Coastal Engineers Conference*, MAFF, London; pp3.1.1-3.1.7
- Pontee NI, Townend IH, 1999a, An estuary cause-consequence model, *34th MAFF Conference of River and Coastal Engineers*, MAFF, London; pp5.2.1-5.2.17
- Pontee NI, Townend IH, 1999b, The development of a framework for estuary Shoreline Management Plans, *Coastal Management: Integrating Science, Engineering and Management*, Thomas Telford; pp117-126
- Townend IH, 1990, Frameworks for shoreline management, *PIANC Bulletin*, 71; pp72-80
- Townend IH, 1992, Shoreline management: a question of definition, *Coastal zone planning and management*, Thomas Telford Services Ltd, London; pp195-210
- Townend IH, 2002, Marine science for strategic planning and management: The requirement for estuaries, *Journal of Marine Policy*, 26(3), 209-219
- Townend IH, Pethick J, 2002, Estuarine flooding and managed retreat, *Phil.Trans.R.Soc.Lond.A*, 360, 1-20
- Townend IH, Pethick J, Balson P, Roberts B, Young R, 2000, The geomorphology of the Humber Estuary, *35th MAFF Conference of River and Coastal Engineers*, MAFF, London; pp3.4.1-3.4.11
- Townend IH, Whitehead PA, 2002, A preliminary net sediment budget for the Humber Estuary, submitted to *The Science of the Total Environment*
- Turner RK, Adger WN, Lorenzoni I, 1998, *Towards integrated modelling and analysis in coastal zones: principles and practice*, Land-ocean interactions in the coastal zone (LOICZ), LOICZ International Project Office, Texel, The Netherlands LOICZ Reports and Studies No.11; pp122.

⁶<http://www.hrwallingford.co.uk/projects/ERP/doclist.asp>

⁷<http://www.abpmer.co.uk/Experience.htm>

